



Book 5



Descendants of George Hepler HORN-80

First Generation

1. **George Hepler HORN-80** was born on 3 Nov 1853. He died on 28 Dec 1934.

The marriage was performed by Pastor S. Renninger.

George married **Ellen (Druckenmiller) HORN-304**, daughter of Henry DRUCKENMILLER-410 and Maria DRUCKENMILLER-411 on 24 Dec 1875. Ellen was born on 20 Mar 1856. She died on 12 Jul 1929.

They had the following child:

- + 2 M i. **Lloyd Daniel HORN-339** was born on 6 Jan 1877.

Second Generation

2. **Lloyd Daniel HORN-339** (George Hepler) was born on 6 Jan 1877.

Lloyd married **Alice E. (Metzger) HORN-340** on 15 Jun 1897. Alice was born on 20 Jun 1871 in Heidelberg Township, Allegheny County, PA. She died on 30 Oct 1959.

They had the following child:

- + 3 F i. **Evelyn Laura Pearl (Horn) GIVLER-341** was born on 8 Sep 1898.

Third Generation

3. **Evelyn Laura Pearl (Horn) GIVLER-341** (Lloyd Daniel, George Hepler) was born on 8 Sep 1898 in Allentown, Lehigh County, PA.

Evelyn married **William Harry GIVLER-207**, son of John GIVLER-243 and Addie GIVLER-241 on 28 Nov 1922. William died on 26 Sep 1960.

They had the following child:

- + 4 M i. **Dale Lloyd George GIVLER-240** was born on 13 Nov 1930.

Fourth Generation

4. **Dale Lloyd George GIVLER-240** (Evelyn Laura Pearl (Horn) GIVLER, Lloyd Daniel, George Hepler) was born on 13 Nov 1930.

Dale married **Margaret Arlene (Heimbach) GIVLER-239**.

They had the following child:

- 5 F i. **Janelle Glenda GIVLER-472** was born on 16 Oct 1958.

Index

DRUCKENMILLER

Henry1.....1
Maria () 1

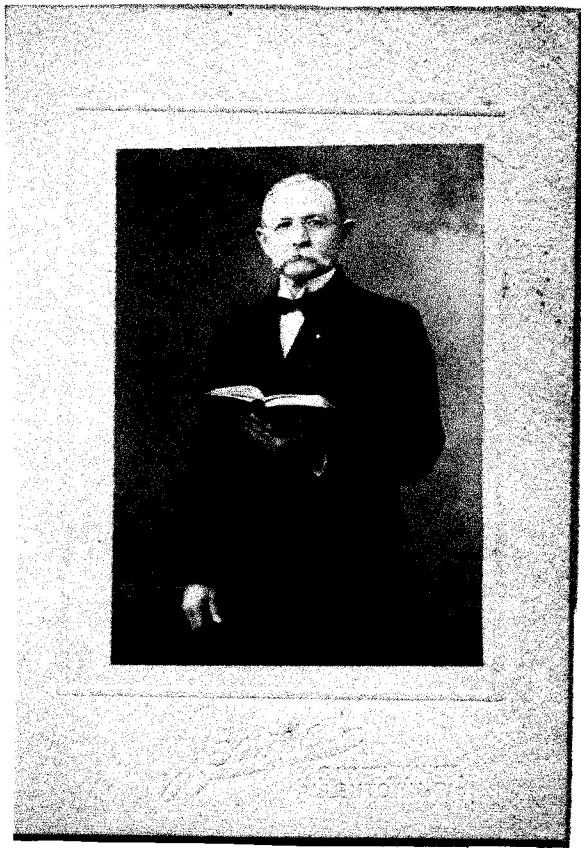
GIVLER

Addie 1
Dale Lloyd George (4 - b.1930) 1, 2
Evelyn Laura Pearl (Horn) (3 - b.1898)
..... 1
Janelle Glenda (5 - b.1958)..... 2

John 1
Margaret Arlene (Heimbach) (4S)..... 2
William Harry (3S - m.1922)..... 1

HORN

Alice E. (Metzger) (2S - b.1871) 1
Ellen (Druckenmiller) (1S - b.1856)..... 1
George Hepler (1 - b.1853)..... 1
Lloyd Daniel (2 - b.1877) 1



George Hepler Horn



Evelyn Laura Pearl (Horn) Givler